

# C-Power series HUB manual

## I .C-Power1200

## II C-Power2200/3200

## III C-Power4200/5200

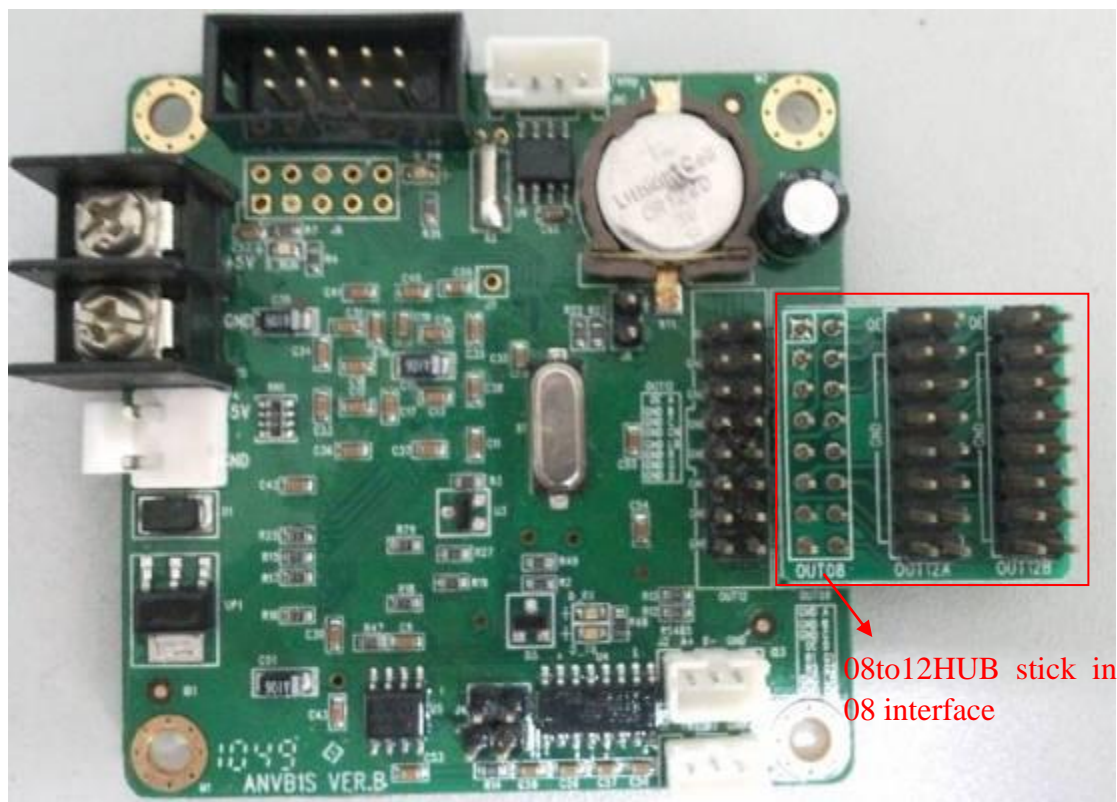
## I .C-Power1200

Control Area: 512\*16、256\*32

Control card comes with a 08 interface and a 12 interface;

When the screen unit plate need two 12 interface (module) high: need to match 08 to 12 HUB, HUB stick in 08 interface control card;

The following diagram:



## ILC-Power2200/3200

C-Power2200 Control Area: 1024\*16、512\*32、256\*64

C-Power3200 Control Area: 1024\*32、512\*64、256\*128

Control card comes with two 08 interface and a 12 interface; control card on the motherboard OUT1 and OUT2 is 08 interface, OUT3 is the 12 interface; the OUT2 can expand HUB (need to fill four pin welding gap) to increase the output interface;

Some interfaces are defined as follows:

### 08 interface (KB020) Definition

2	A	B	C	D	G1	G2	LD	CK	16
1	GND	GND	GND	OE	R1	R2	GND	GND	15

### 12 interface (KB004) Definition

2	A	B	C	CK	LD	R	G	D	16
1	OE	GND	GND	GND	GND	GND	GND	GND	15

### The control interface OUT2 08 interface expanded

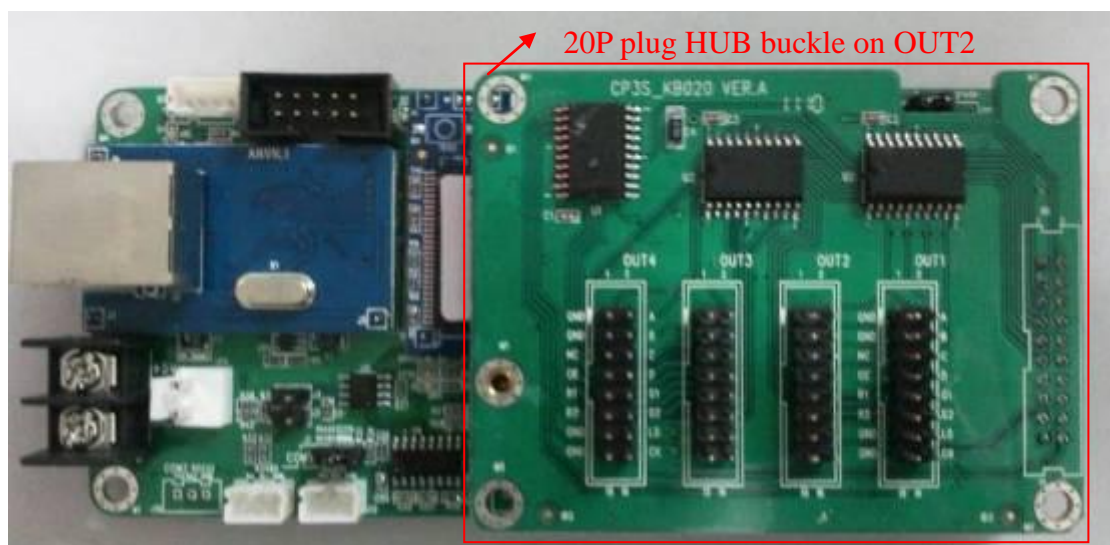
2	A	B	C	D	G1	G2	LD	CK2	CK3	CK4	20
1	GND	GND	GND	OE	R1	R2	GND	GND	CK1	VCC	19

### 1、 Display interface for the two groups of signal (such as 08 interface):

The screen has 3 or 4 unit plates (module) high;

Need a 20P plug HUB, HUB buckle on OUT2 ;

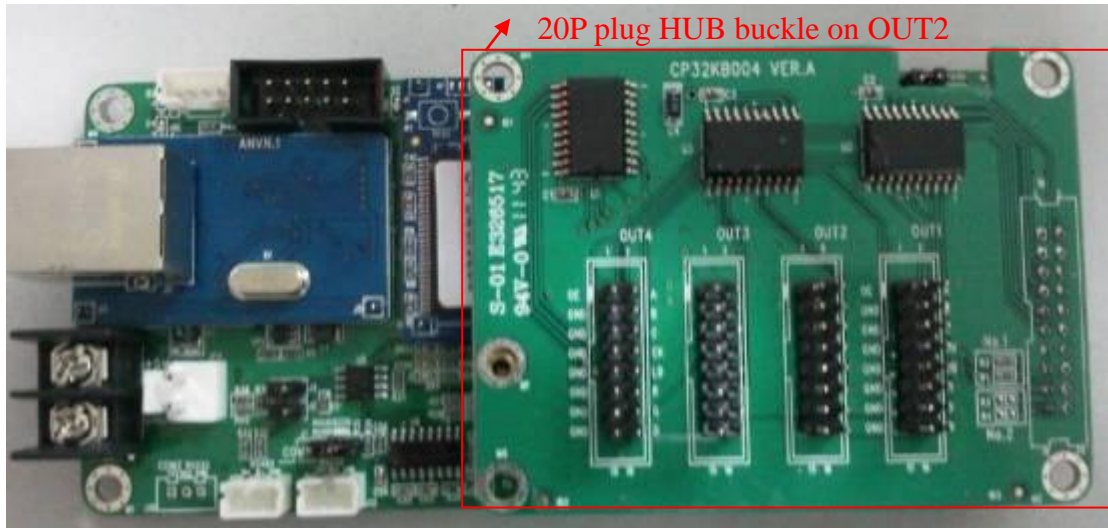
The following diagram:



## 2、 Display interface for a group of signal (such as 12 interface):

- 1)、 The screen has 2 to 4 unit plates (module) high:  
Need a 20P plug HUB, HUB buckle on OUT2;

The following diagram:



- 2)、 The screen has 5 to 8 unit plates high:

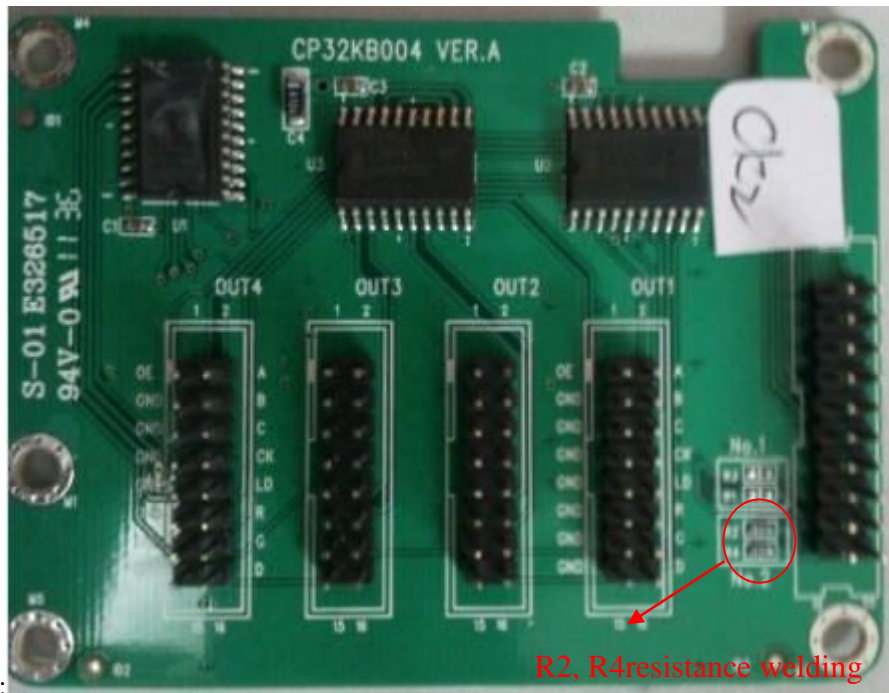
Need two 20Pin type HUB, a 20P of one to two cable (3 sockets are the same), and the resistance of HUB R1 to the R4 welding is also different; HUB1 welding of R1, R3 resistance, HUB2 R2, R4 resistance welding; Finally, cable and control card connection, a mouth inserted in the control card OUT2, the other 2 ports connected with a HUB;

The following HUB, cable and connecting method:

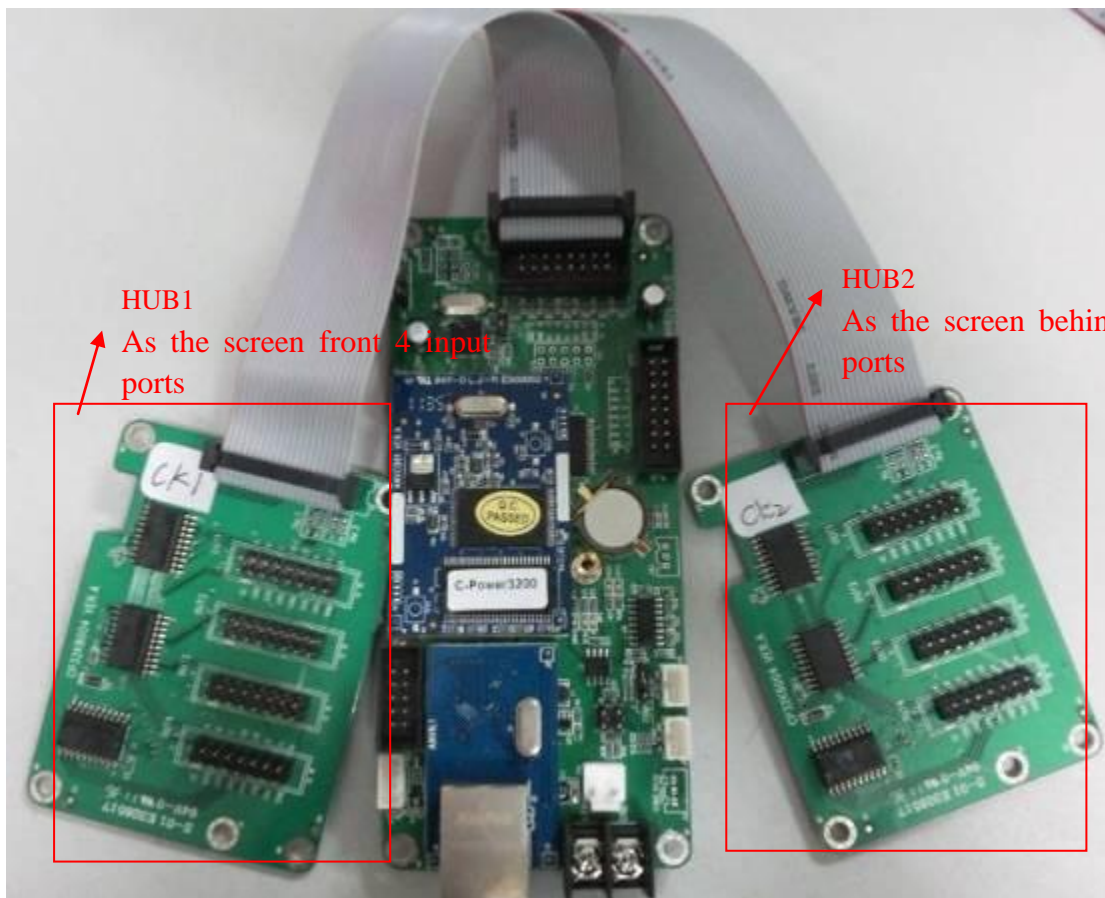


PIN Type HUB1:





PIN Type HUB2:



# III-Power4200/ 5200

C-Power4200 Control Area: 2048\*256、1024\*512

C-Power5200 Control Area: 1024\*64、768\*80、512\*128、256\*256

Some interfaces are defined as follows:

08 interface (KB20) Definition (Full Color or Double Color )

2	A	B	C	B2	G1	G2	LD	CK	16
1	GND	GND	B1	OE	R1	R2	GND	GND	15

12 interface (KB04) Definition

2	A	B	C	CK	LD	R	G	D	16
1	OE	GND	GND	GND	GND	GND	GND	GND	15

75 interface (KB21) Definition

2	G1	GND	G2	GND	B	GND	LD	GND	16
1	R1	B1	R2	B2	A	C	CK	OE	15

40 interface (KB02) Definition

2	R0	B0	R1	B1	GND	GND	GND	GND	16
1	R0	G0	R1	G1	CK	LD	OE	GND	15

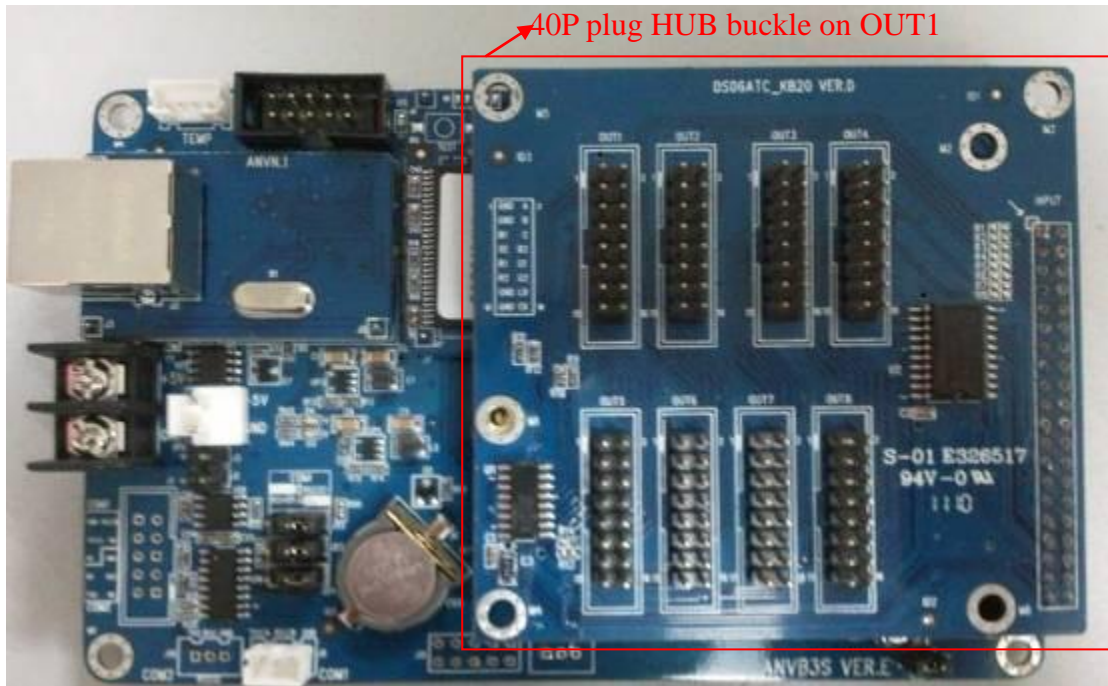
97 interface (KB25) Definition

2	G	GND	GND	A	B	10
1	R	U	CK	LD	OE	9

1、Display interface for the two groups of signal (such as 08 、 75 、 40 interface):

- 1) 、 The screen has 1 to 8 unit plates (module) high:  
Only need a 40P plug HUB, HUB buckle on OUT1;

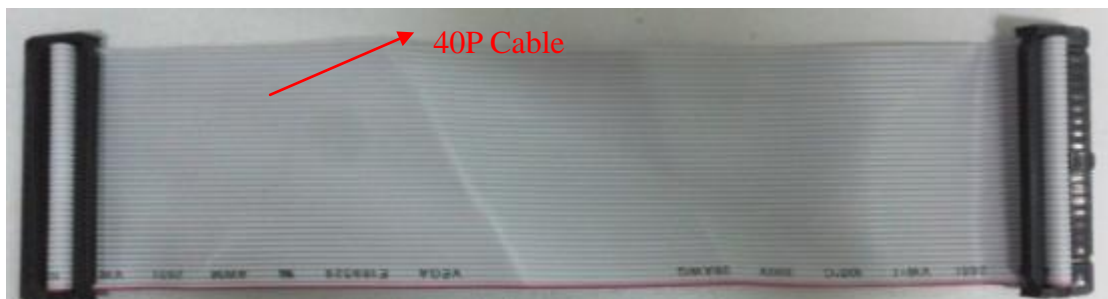
The following diagram:



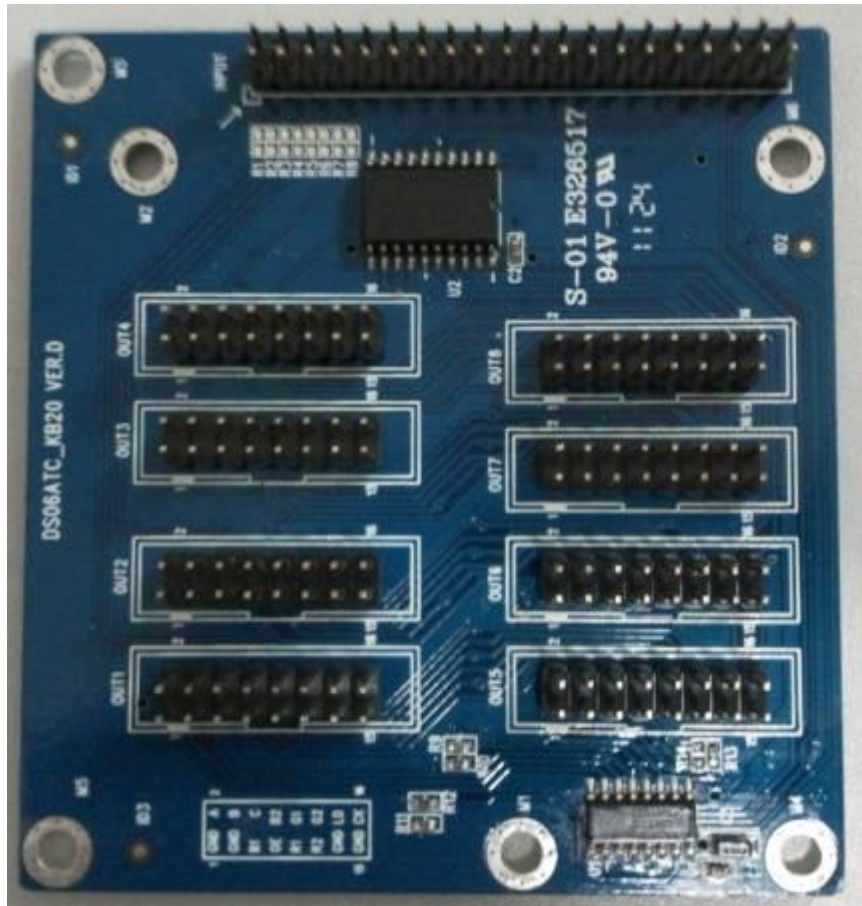
- 2) 、 The screen has 9 to 16 unit plates (module) high:

Need two 40P pin type HUB,two 40P cables; each HUB with a 40P cable, respectively connected to the control card OUT1 and OUT2;

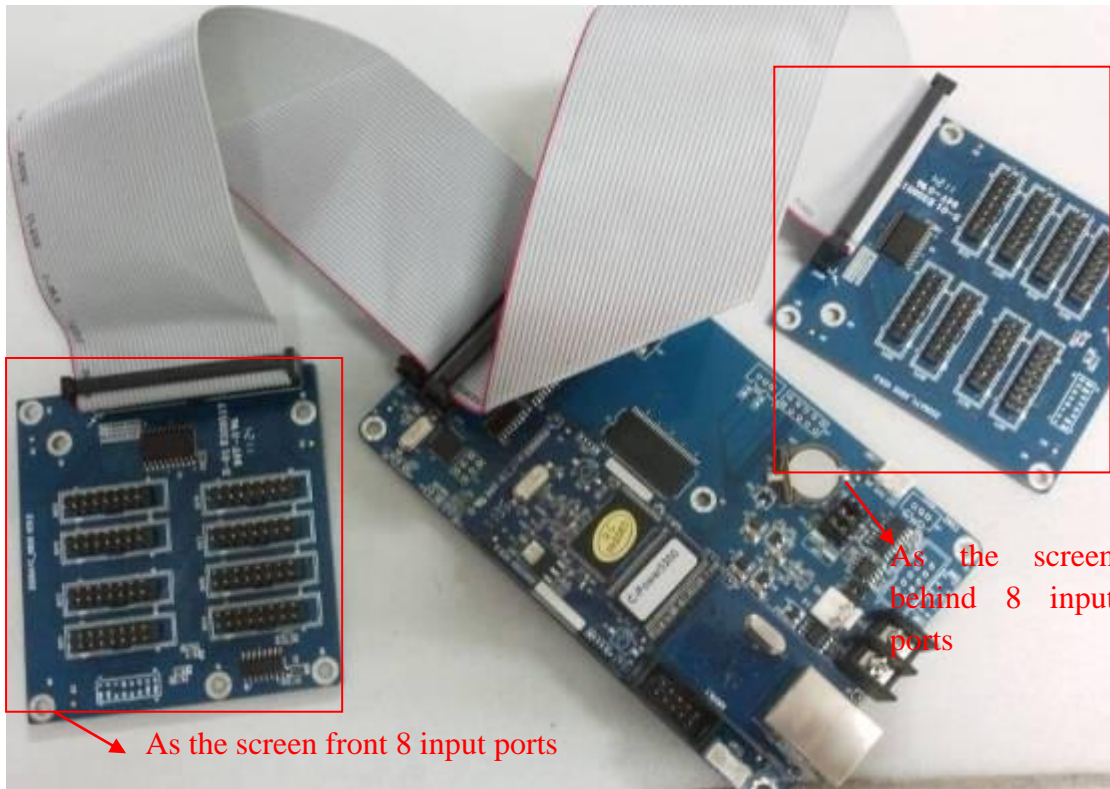
The following HUB, cable and connecting method:







PIN Type HUB:



As the screen front 8 input ports

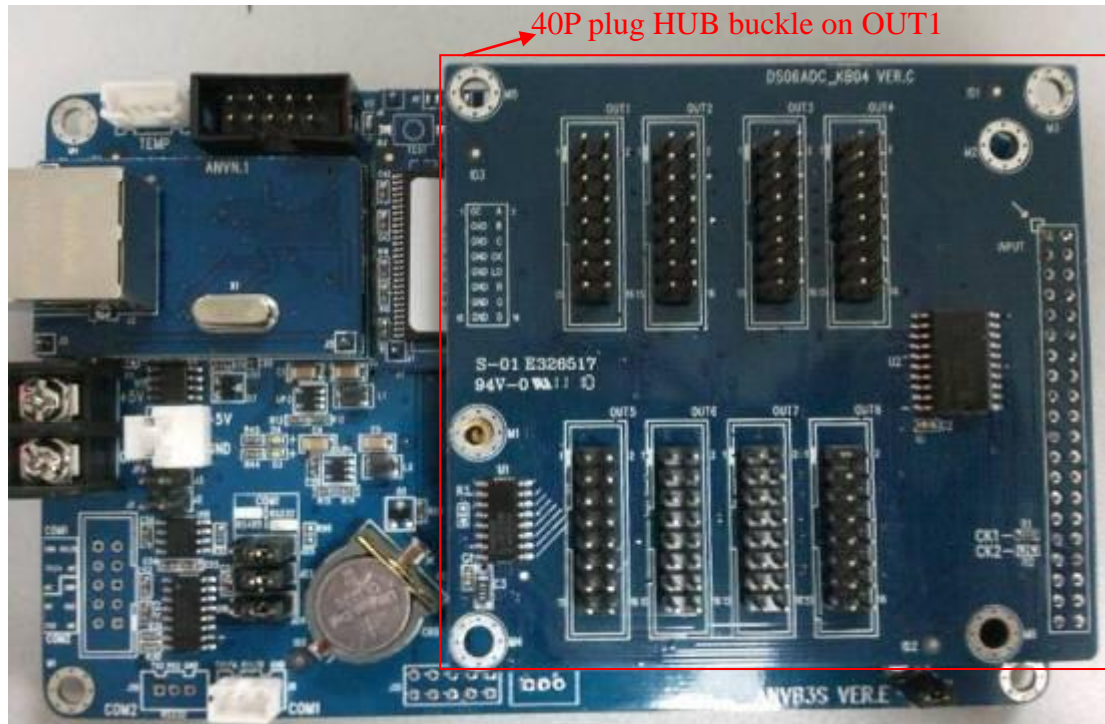
As the screen behind 8 input ports

## 2、 Display interface for a group of signal (such as 12 interface):

1)、 The screen has 1 to 8 unit plates (module) high:

Only need a 40P plug HUB, HUB buckle on OUT1;

The following diagram:



2)、 The screen has 9 to 16 unit plates(module) high:

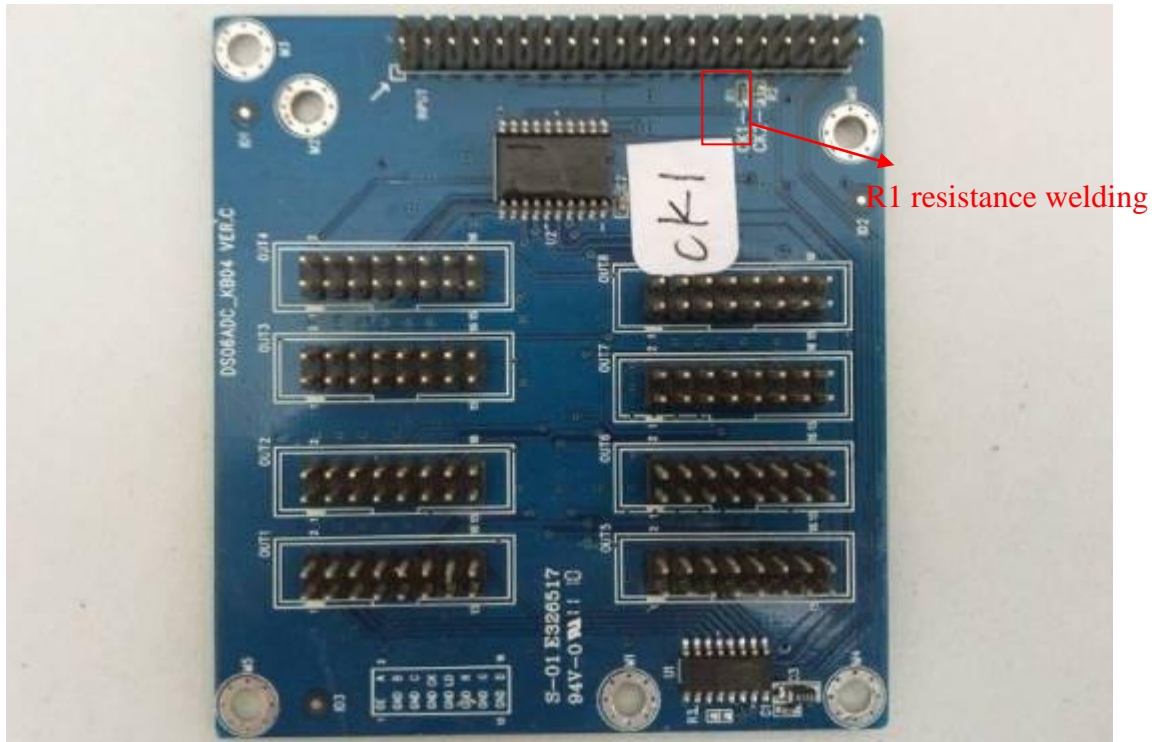
Need two 40Pin type HUB, a 40P of one to two cable (3 sockets are the same), and the resistance of HUB R1 to the R4 welding is also different; HUB1 welding of R1 resistance, HUB2 R2 resistance welding; Finally, cable and control card connection, a mouth inserted in the control card OUT2, the other 2 ports connected with a HUB;

The following HUB, cable and connecting method:

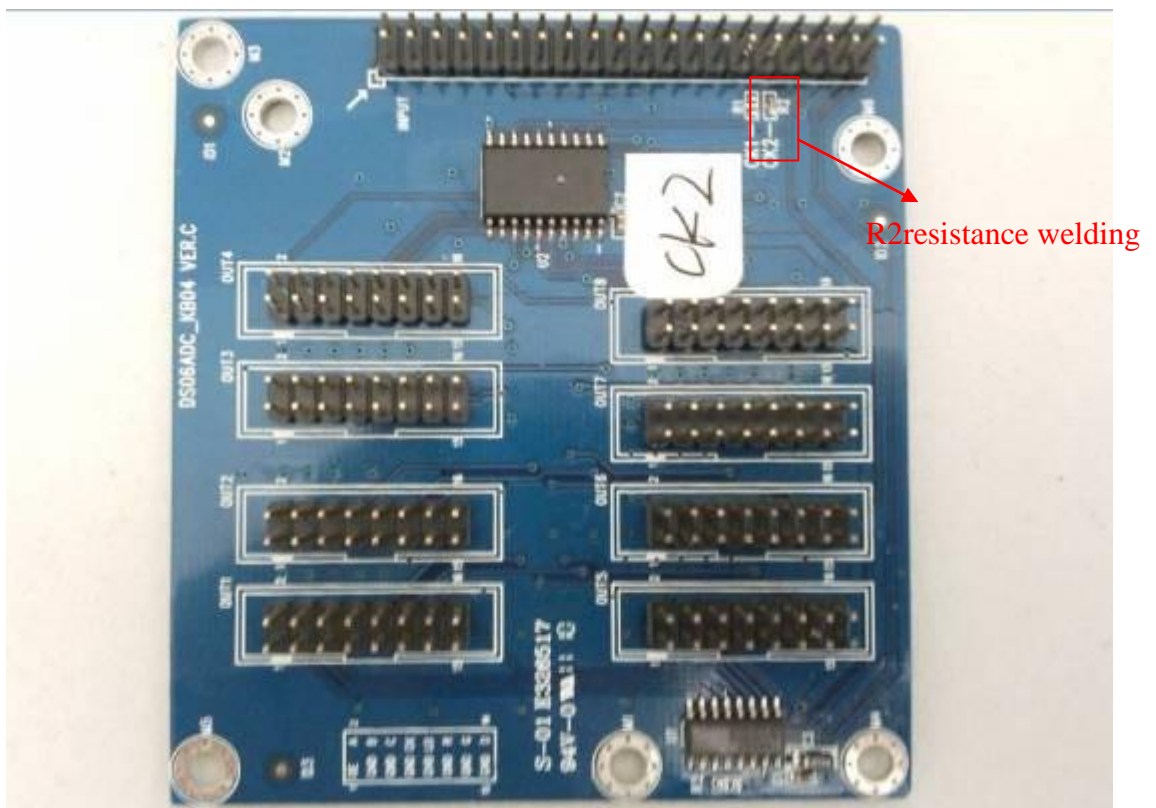


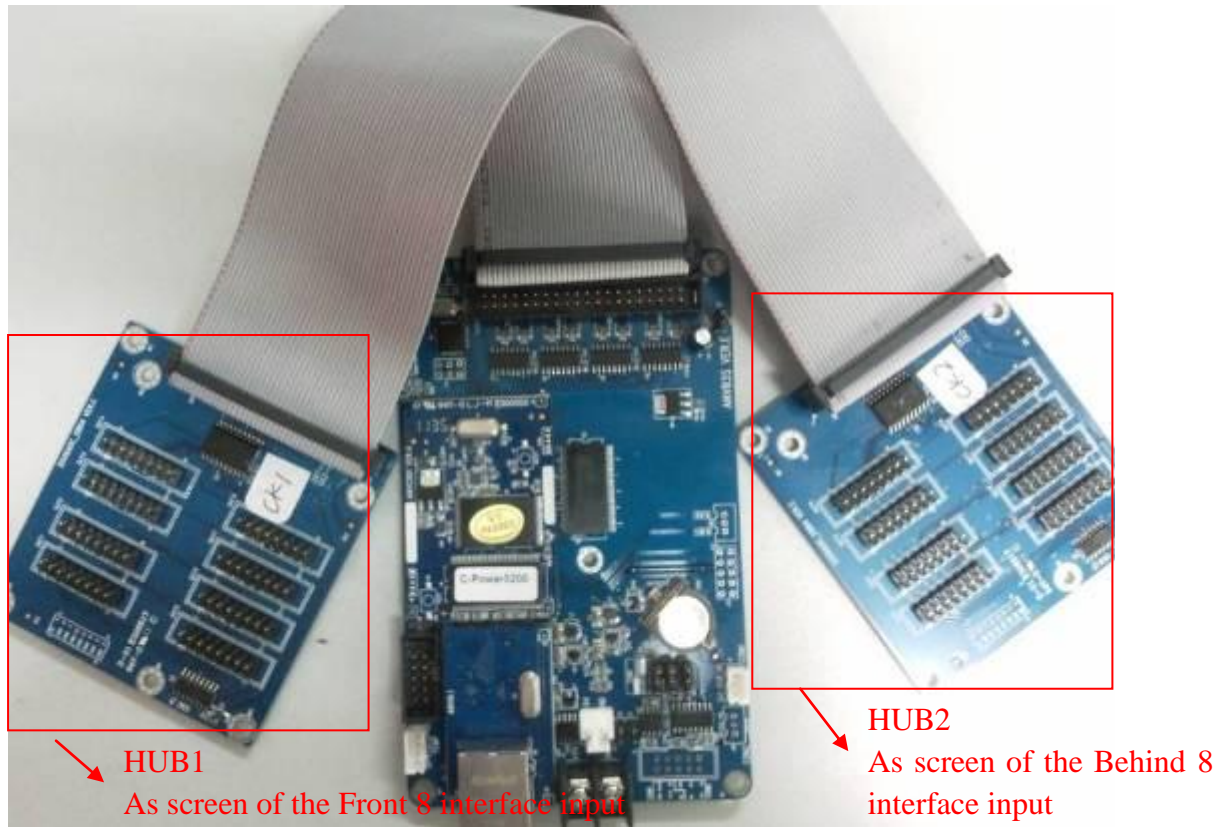


PIN Type HUB1:



PIN Type HUB2:

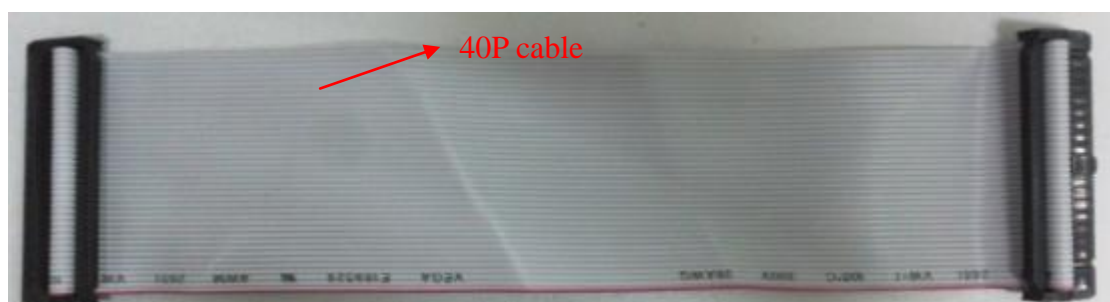


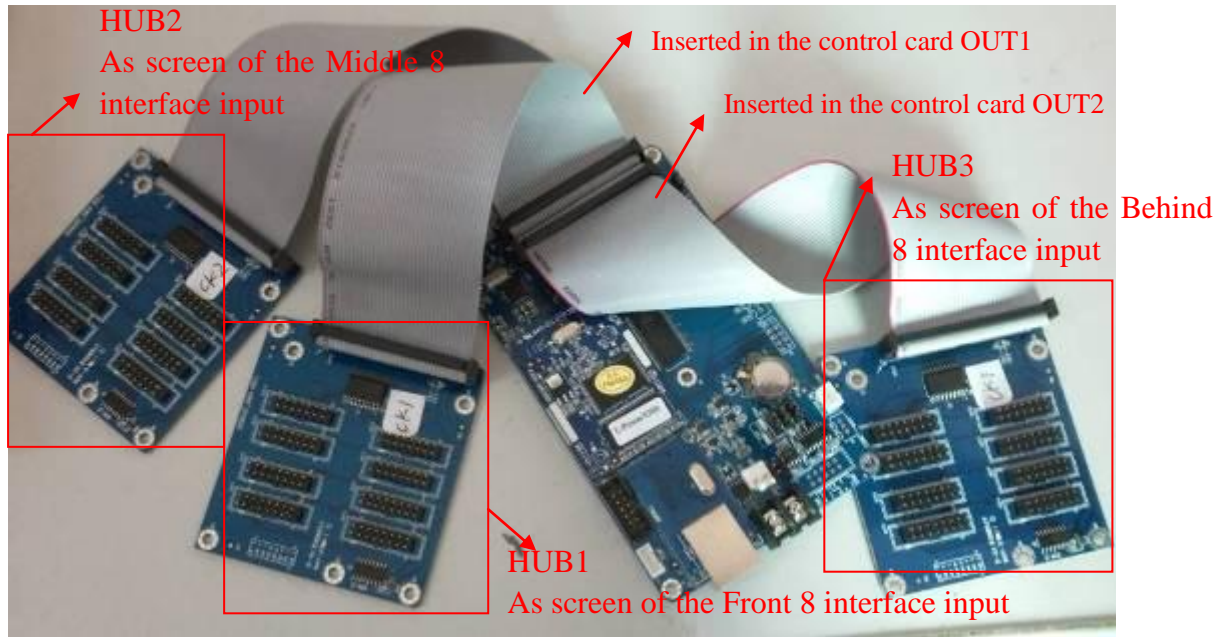


3)、The screen has 17 to 24 unit plates(module) high:

Need three 40Pin type HUB, a 40P of one to two cable (3 sockets are the same), a 40P cable; resistance of HUB R1 to the R4 welding is also different; HUB1 and HUB3, HUB2 R2 resistance welding; Finally, cable and control card connection, a mouth inserted in the control card OUT1, the other 2 ports connected with a HUB; 40P cable and control card connection, a mouth inserted in the control card OUT2

The following HUB, cable and connecting method:

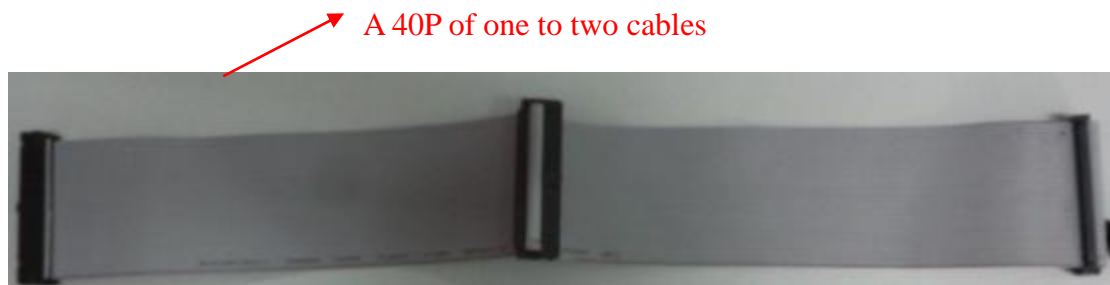




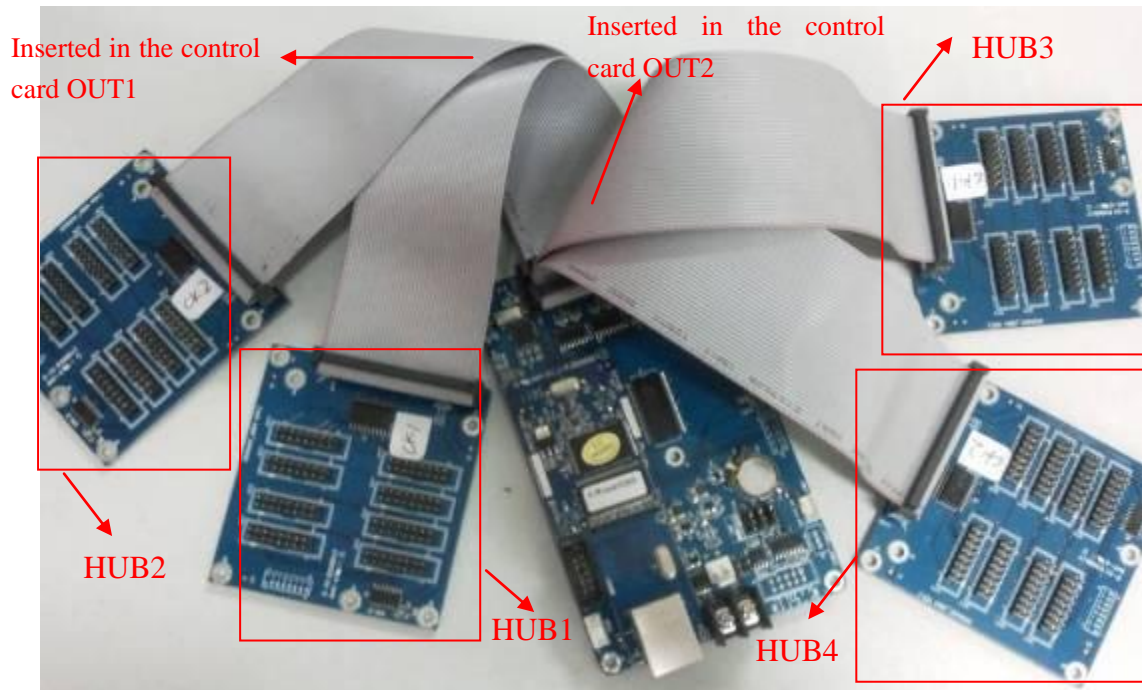
4) 、 The screen has 25 to 32 unit plates(module) high:

Need four 40Pin type HUB, a 40P of one to two cable (3 sockets are the same), two 40P cables, each cable connect with two HUB; resistance of HUB R1 to the R4 welding is also different; HUB1 and HUB3, HUB2 and HUB4 R2 resistance welding; Finally, cable and control card connection, a mouth inserted in the control card OUT1, the other 2 ports connected with HUB1 and HUB2; Other 40P cable and control card connection, a mouth inserted in the control card OUT3 and OUT4.

The following HUB, cable and connecting method:







HUB and the screen connection: the screen from top to bottom orderly wiring, first picked up HUB1, and so on the last received HUB4.